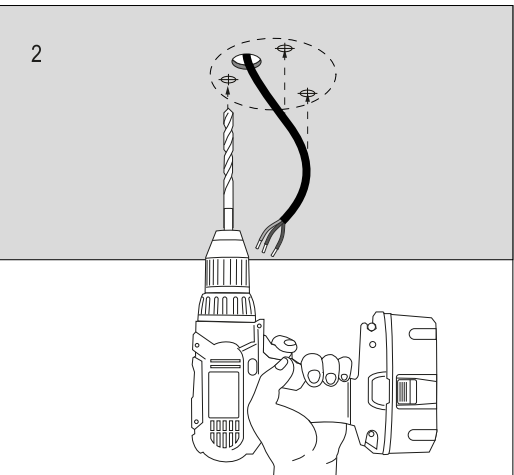
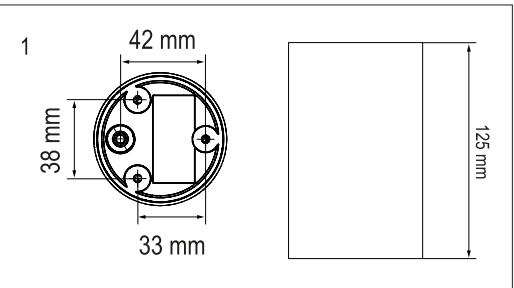


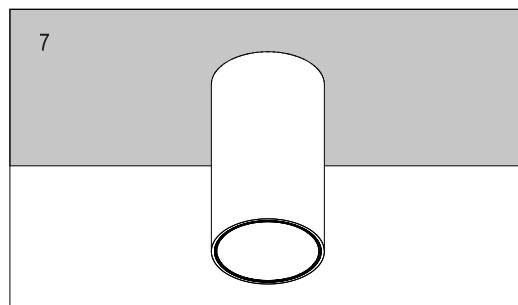
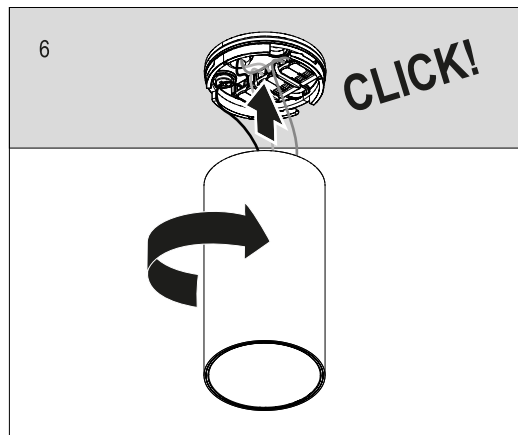
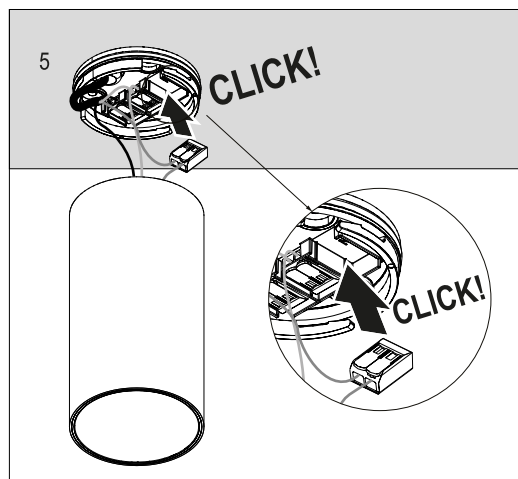
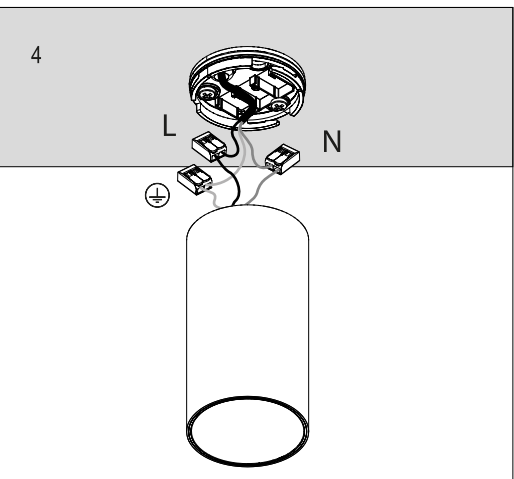
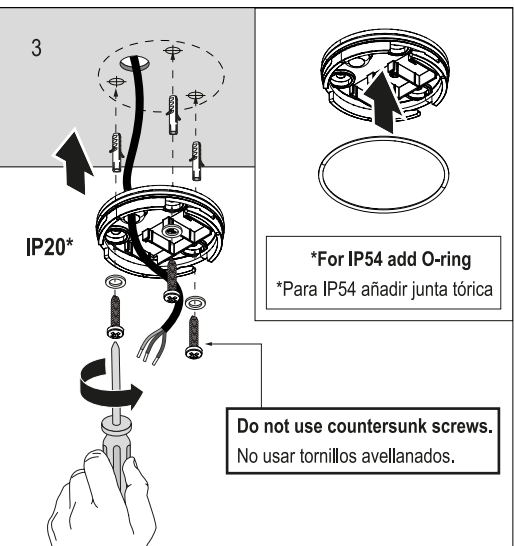
A LUMINAIRE INSTALLATION

INSTALACIÓN DE LA LUMINARIA / INSTALLAZIONE DELLA LAMPADA /
 INSTALLATION DER BELEUCHTUNG / INSTALLATION DU LUMINAIRE /
 INSTALAÇÃO DO APARELHO DE ILUMINAÇÃO / 照明器具の設置・据付け /
 灯具的安装 / МОНТАЖ ОСВЕТИТЕЛЬНОГО ПРИБОРА
 ШАМДАЛДЫ ОРНАТУ / تركيب وحدة الإنارة

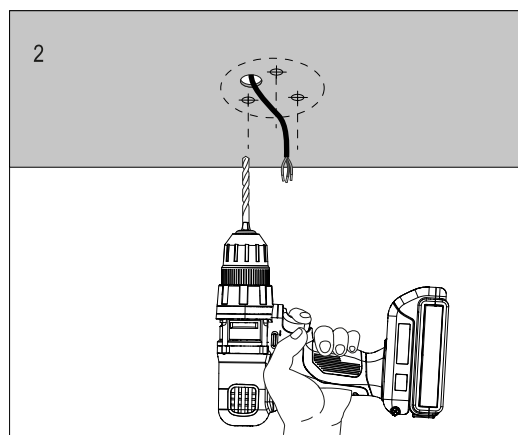
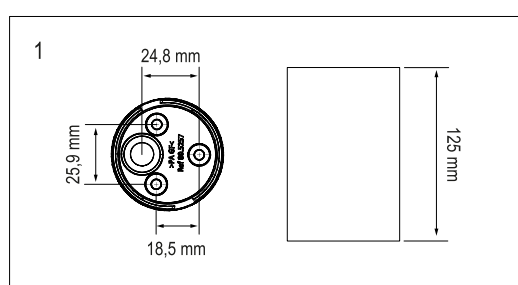
A.1 Light Shadow Surface 60



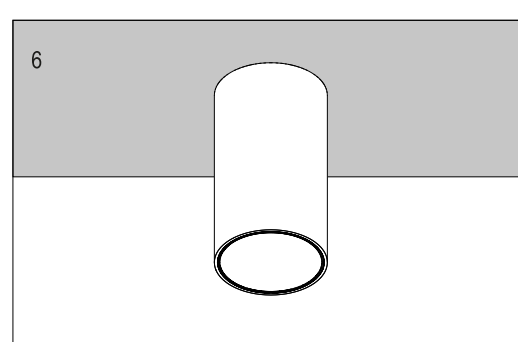
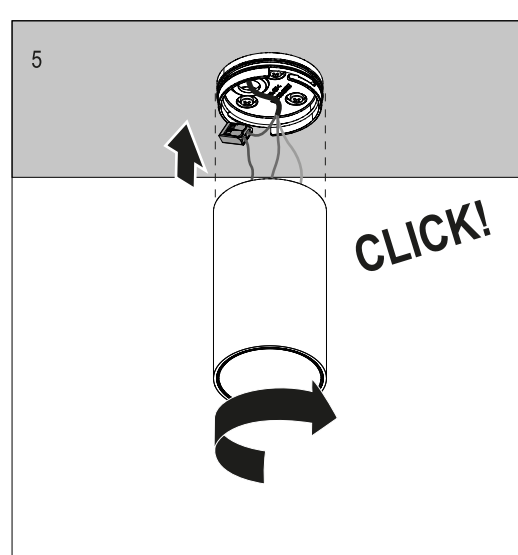
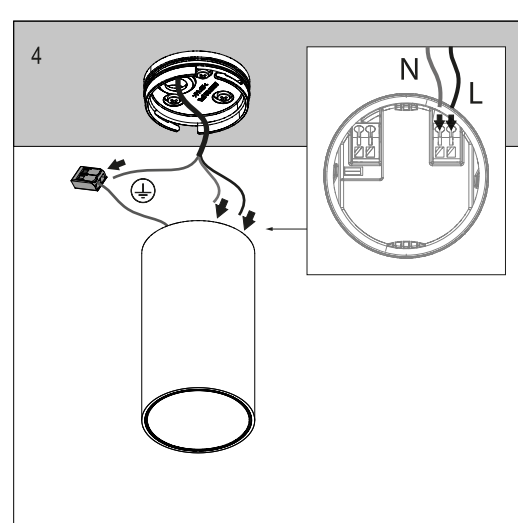
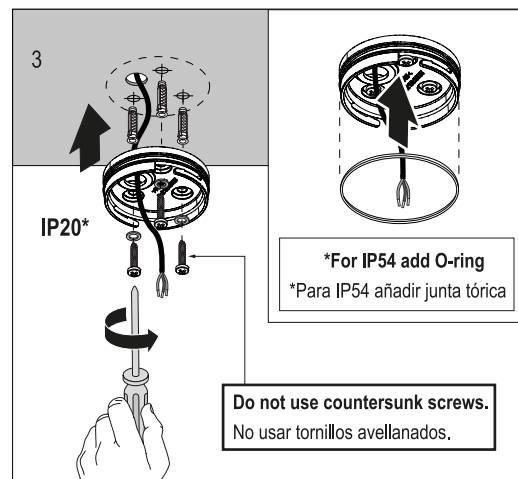
! *For IP54 use 3x1mm hose cable (Ø 6,7mm)
 *Para IP54 usar manguera de 3x1mm (Ø 6,7mm)



A.2 Light Shadow Surface 45



! *For IP54 use 3x1mm hose cable (Ø 6,7mm)
 *Para IP54 usar manguera de 3x1mm (Ø 6,7mm)



	Replaceable (LED only) light source by a professional / Fuente de luz (solo LED) reemplazable por un profesional
	Replaceable control gear by professional / Equipo de control reemplazable por profesional

	WARNING
E	La luminaria debería colocarse de forma que no se espera una mirada prolongada a la luminaria a una distancia más cercana a X m
GB	The luminaire should be positioned so that prolonged staring into the luminaire at a distance closer of X m, is not expected.
I	L'apparechio dovrà essere collocato in modo che non ci si aspetti uno sguardo prolungato verso l'apparechio da una distanza di circa x m.
D	Die Lampe ist so zu positionieren, dass ein direkter Blick vermieden wird. Dies geschieht durch eine Längspositionierung auf x Metern Distanz.
F	Le luminaire doit être positionné de manière à ne pas attendre un regard prolongé vers le luminaire à une distance proche de x mètres.
P	A luminária deverá ser posicionada de tal forma que uma pessoa a x metros de distancia não mantenha o olhar prolongado à mesma..
JP	本照明器具は、X mより近い距離から内部を長時間凝視することがない場所に設置してください。
CN	请勿将灯具放置于接近于离视线 X 公尺的距离。
RU	Светильник должен располагаться таким образом, чтобы длительное зрение на светильник находилось на расстоянии x м
AR	متنر لتجنب انظر الى الإنارة لمدة طويلة، يجب وضع الإنارة على مسافة أقرب من
KZ	Ұзақ қарау күтілместей а x м-ға ең жақын дейінгі қашықтықтағы жарық түсіргіш құрылғы орналыстырған жөн

LIGHT SHADOW SURFACE 45		
OPTICS	T°	X
Spot	4000 K	X = 249 cm
Medium	4000 K	X = 213 cm
Flood	4000 K	X = 135cm

- CLASIFICACION ENERGÉTICA **F**
 - ENERGY CLASSIFICATION