

FLOS

05.1225.40ANI White/Copper

Light Shadow Fixed Trim Mains dimming Version 8 Spots Optic Flood NEW

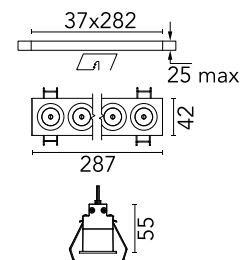
Designed by FLOS Architectural, 2022



Recessed integrated luminaire with 8 LED lighting spots. Remote power supply included (220-240V).

Are you a professional and your project needs consulting and support?

[BOOK AN APPOINTMENT](#)



Main specifications

Mounting	Ceiling recessed
Environments	Indoor dry location
Light Source Type	LED
LED type	Power LED
Number of heads	1
Power (W)	20.9
System power (W)	21.6
Source flux (lm)	2280
System flux (lm)	1636

Physical

Colour	White/Copper
Trim	Yes
Orientation	Fixed
Recessed depth (mm)	75
Length (mm)	287
Net weight (kg)	0.5
IP internal	20
IP external	55

Download

Mounting instructions [↓ PDF](#)

Photometric Files

LDT / IES [↓ ZIP](#)

Technical Drawings

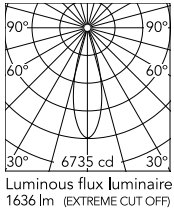
2D [↓ ZIP](#)

3D [↓ ZIP](#)

[↓ ZIP](#) Bim



Schematic light drawing

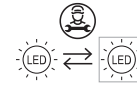


Beam Angle: 29°

h(m)	E(lx)	D(m)
1	6735	0.51
2	1683	1.02
3	748	1.53
4	420	2.05
5	270	2.56

Luminous flux Luminaire
1636 lm (EXTREME CUT OFF)

Ecodesign and Energy Labelling



Replaceable (LED only)
light source by a
professional



Replaceable control
gear by a professional

Photometric

Lighting type	Direct
Light distribution	Symmetric
CCT (K)	3000
CRI>	90
LED Life / Failure Ratio	L80B50
Beam angle C0-180 (°)	33
Beam angle C90-270 (°)	33

Electrical

Insulation class	II
Frequency (Hz)	50/60
Main voltage (Vac)	220-240
LED voltage Vf (Vdc)	23.8
LED current (mA)	900
Driver	Remote included
Dimmable	Yes
Dimming type	Mains Cut Dimming

Notes

Pre-installation frame not required.