

ATTENTION / ATENCIÓN

E La luminaria debería colocarse de forma que no se espera una mirada prolongada a la luminaria a una distancia más cercana a D m

GB The luminaire should be positioned so that prolonged staring into the luminaire at a distance of D m. is not expected.

I L'apparechio dovrà essere collocato in modo che non ci si aspetti uno sguardo prolungato verso l'apparechio da una distanza di circa D m.

D Die Lampe ist so zu positionieren, dass ein direkter Blick vermieden wird. Dies geschieht durch eine Längspositionierung auf D Metern Distanz.

F Le luminaire doit être positionné de manière à ne pas attendre un regard prolongé vers le luminaire à une distance proche de D mètres.

P A luminária deverá ser posicionada de tal forma que uma pessoa a D metros de distancia não mantenha o olhar prolongado à mesma..

JP 本照明器具は、D mより近い距離から内部を長時間凝視することがない場所に設置してください。

CN 请勿将灯具放置于接近于离视线 D 公尺的距离。

RU Светильник должен располагаться таким образом, чтобы длительное зрительное наблюдение на светильник находилось на расстоянии D м

AR متر D لتجنب النظر الى الإنارة لمدة طويلة، يجب وضع الإنارة على مسافة أقرب من

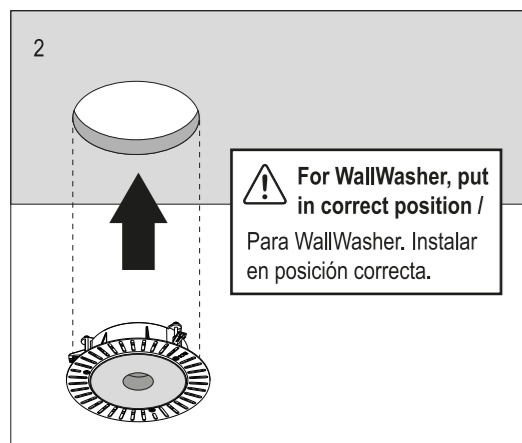
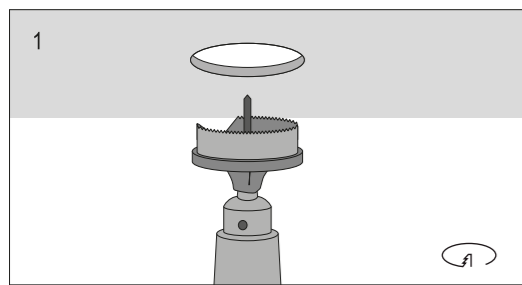
KZ Ұзақ қарау күтілместей а D m-ға ең жақын дейінгі қашықтықтағы жарық түсірігіш құрылғы орынлстырған жөн

Ref	
03.993X	D= 2,5 m
03.997X	
03.9940	
03.9980	
03.9985	
05.25XX	
Others	D= 0,2 m

B LUMINAIRE INSTALLATION

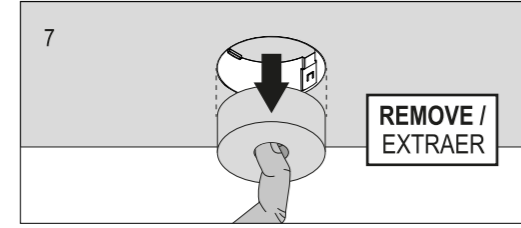
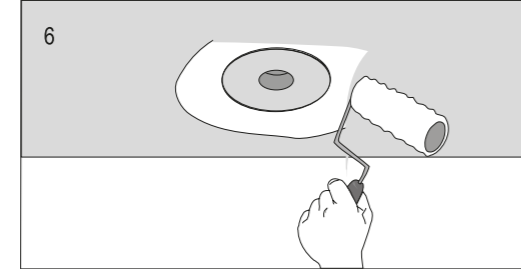
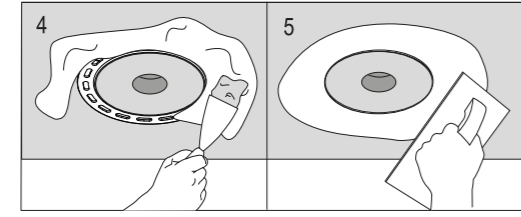
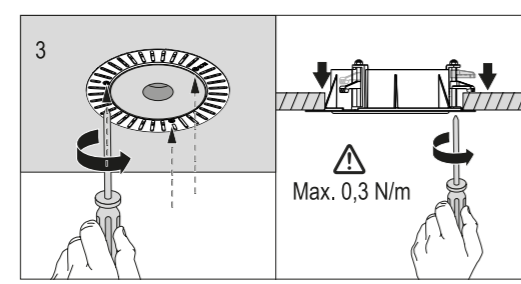
INSTALACIÓN DE LA LUMINARIA / INSTALLAZIONE DELLA LAMPADA / INSTALLATION DER BELEUCHTUNG / INSTALLATION DU LUMINAIRE / INSTALAÇÃO DO APARELHO DE ILUMINAÇÃO / 照明器具の設置-据付け / 灯具的安装 / МОНТАЖ ОСВЕТИТЕЛЬНОГО ПРИБОРА / ШАМДАЛДЫ ОРНАТУ / تركيب وحدة الإنارة

NO TRIM

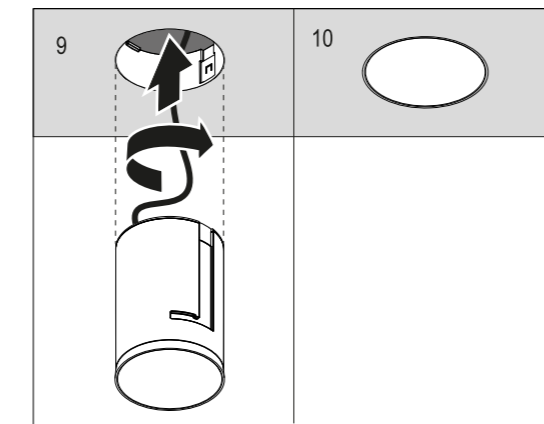
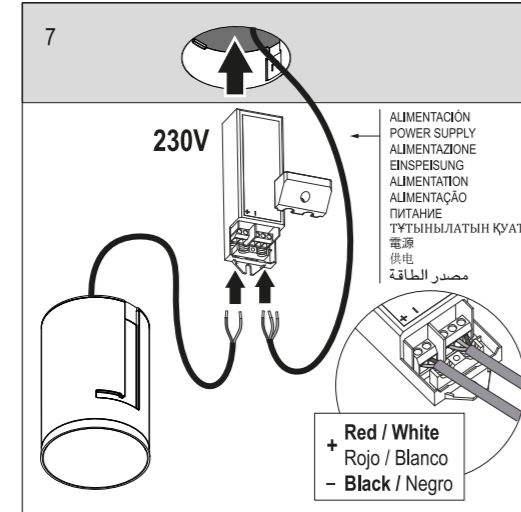


WALL WASHER

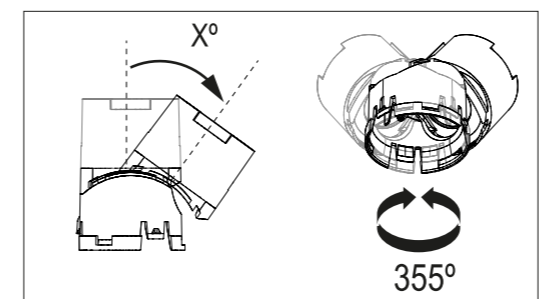
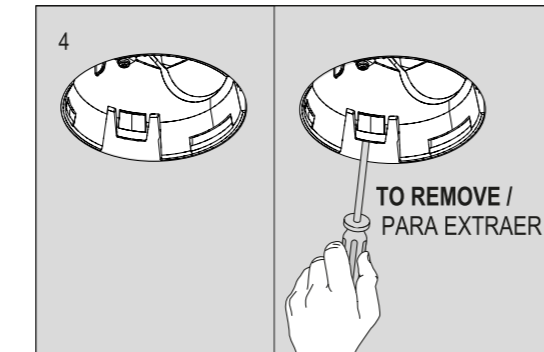
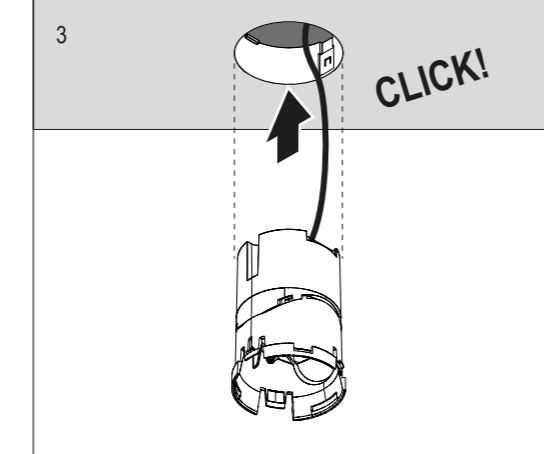
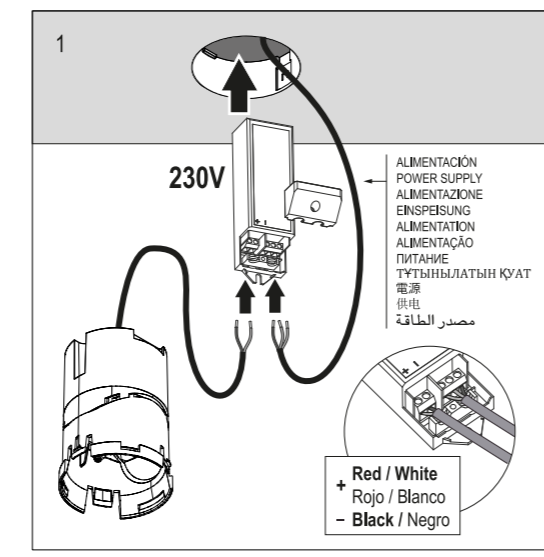
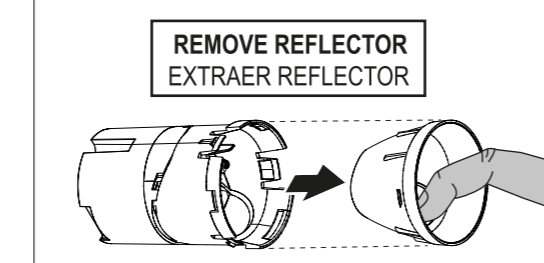
i Wall Washer Beam Direction
Wall Washer
Direccion del Haz



NO TRIM FIX

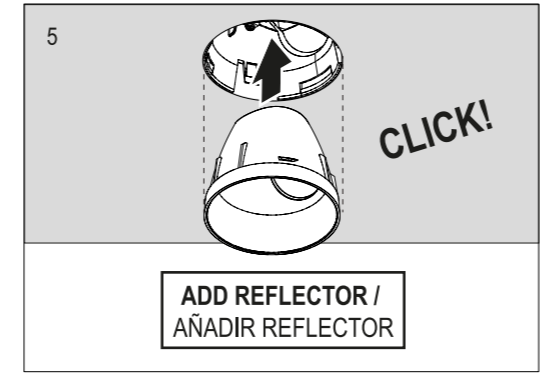
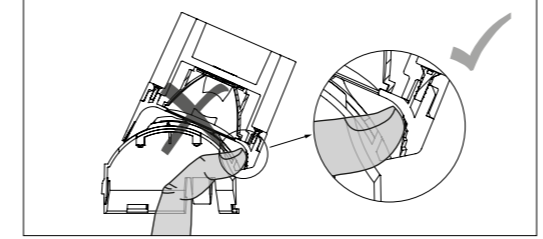


NO TRIM ADJUSTABLE

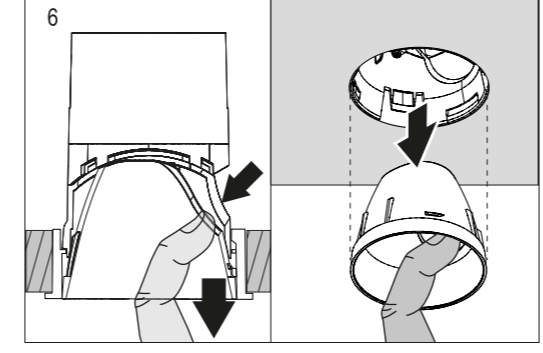


Light shadow 60 X = 30°
Light shadow 90 X = 35°

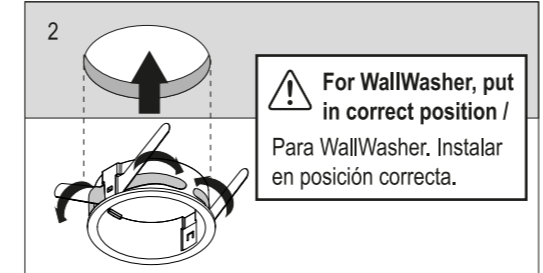
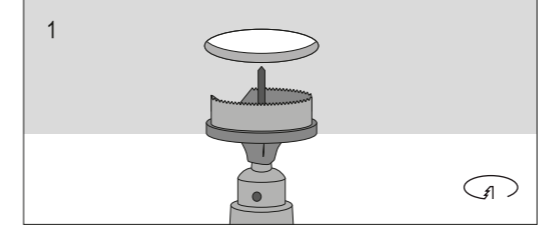
WARNING / ATENCIÓN: Don't touch the lens with your finger / No toque la lente con el dedo.



TO REMOVE / PARA EXTRAER

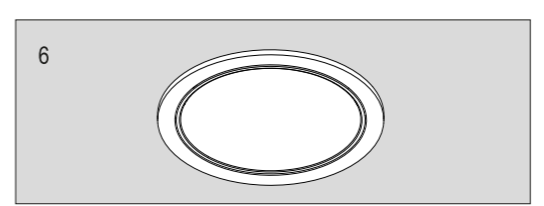
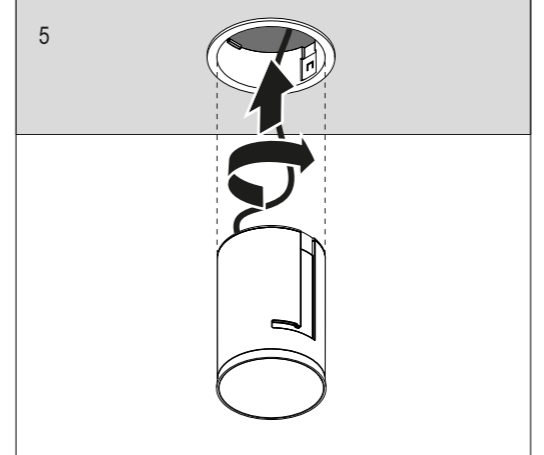
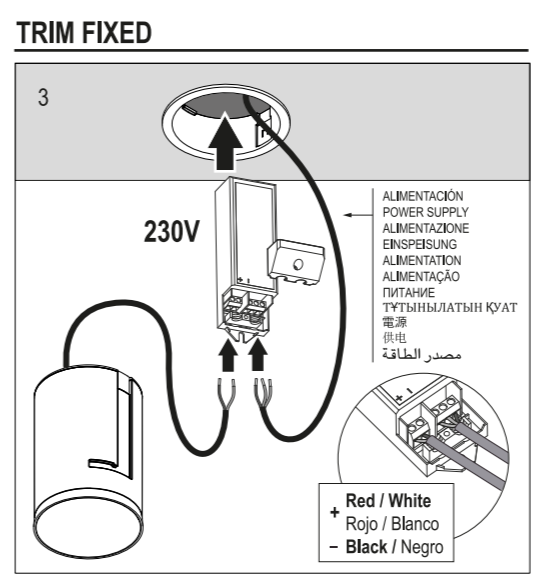


TRIM

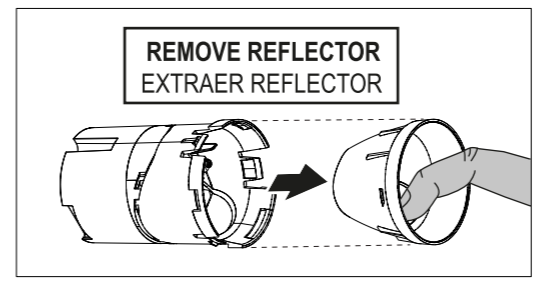


WALL WASHER

i Wall Washer Beam Direction
Wall Washer
Direccion del Haz

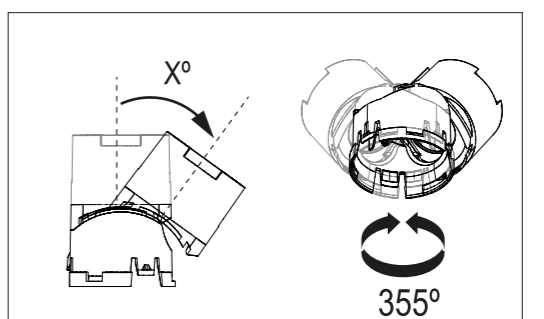
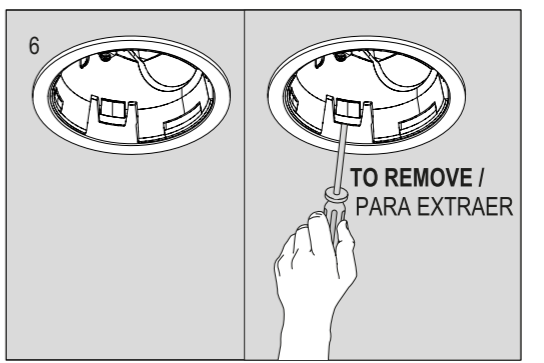
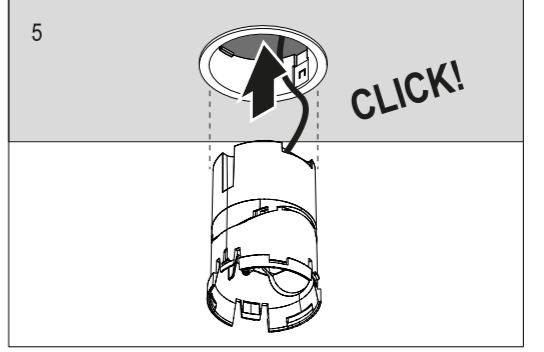


TRIM ADJUSTABLE



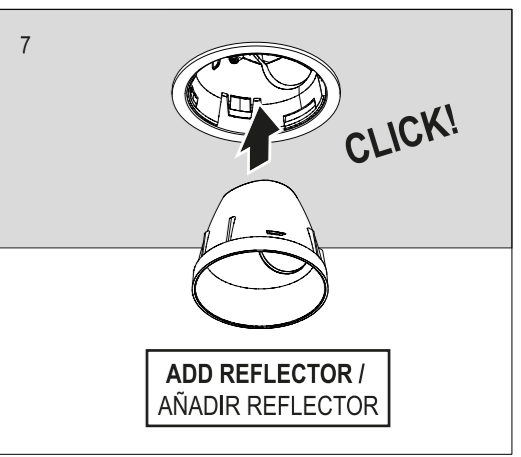
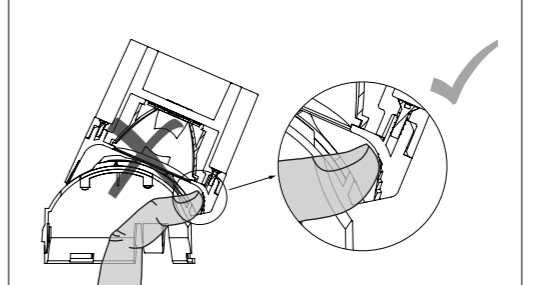
WALL WASHER

i Wall Washer Beam Direction
Wall Washer
Direccion del Haz

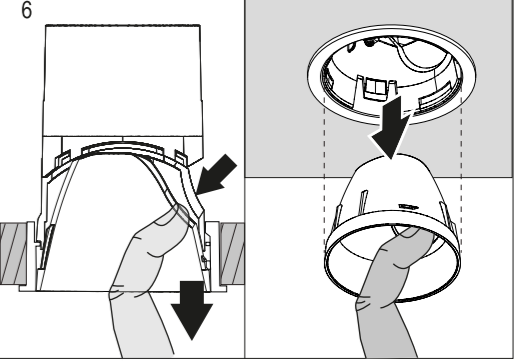


Light shadow 60 X = 30°
Light shadow 90 X = 35°

WARNING / ATENCIÓN: Don't touch the lens with your finger / No toque la lente con el dedo.



TO REMOVE / PARA EXTRAER



LED DRIVER

≤ 60 Vout

ATTENTION / ATENCIÓN

The voltage under load does not exceed 25 V r.m.s. or 60 V ripple-free d.c. and the no-load voltage does not exceed 35 V peak or 60 V ripple-free d.c.
La tensión bajo carga no supera los 25 V r.m.s. o 60 V sin ondulaciones d.c. y la sin carga el voltaje no excede los 35 V pico o 60 V sin ondulaciones d.c.

ESD KEEP INSIDE ESD SAFETY BAG / MANTENER DENTRO DE LA BOLSA DE SEGURIDAD ESD

Cable Section / Sección del cable

Conductor	Section Min / Sección Min
	0,75 mm ² / AWG 18

- CLASIFICACION ENERGÉTICA
- ENERGY CLASSIFICATION

F

Replaceable (LED only) light source by a professional / Fuente de luz (solo LED) reemplazable por un profesional

Replaceable control gear by professional / Equipo de control reemplazable por profesional