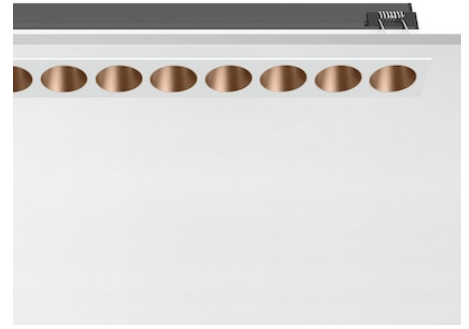


FLOS

05.1305.40A White/Copper

Light Shadow Fixed Trim 12 Spots Optic Spot NEW

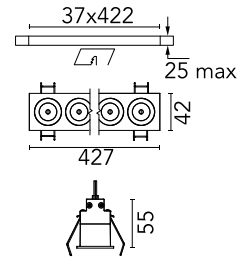
Designed by FLOS Architectural, 2022



Recessed integrated luminaire with 12 LED lighting spots. Remote power supply included (220-240V).

Are you a professional and your project needs consulting and support?

[BOOK AN APPOINTMENT](#)



Main specifications

| | |
|------------------|---------------------|
| Mounting | Ceiling recessed |
| Environments | Indoor dry location |
| LED type | Power LED |
| Lamp category | LED |
| Number of heads | 1 |
| Power (W) | 32.4 |
| Source flux (lm) | 3420 |
| System flux (lm) | 2416 |

Physical

| | |
|---------------------|--------------|
| Colour | White/Copper |
| Trim | Yes |
| Orientation | Fixed |
| Recessed depth (mm) | 75 |
| Length (mm) | 427 |
| Net weight (kg) | 0.66 |
| Package height (mm) | 10 |
| Package width (mm) | 13 |
| IP internal | 20 |
| IP external | 55 |

Download

Mounting instructions [↓ PDF](#)

Photometric Files

LDT / IES [↓ ZIP](#)

Technical Drawings

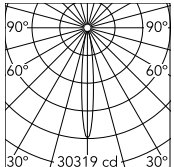
2D [↓ ZIP](#)

3D [↓ ZIP](#)

[↓ ZIP](#) Bim



Schematic light drawing

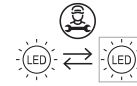


Beam Angle: 12°

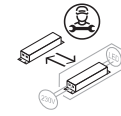
| h(m) | E(lx) | D(m) |
|------|-------|------|
| 1 | 30319 | 0.22 |
| 2 | 7580 | 0.44 |
| 3 | 3370 | 0.66 |
| 4 | 1894 | 0.88 |
| 5 | 1213 | 1.09 |

Luminous flux Luminaire
2416 lm (EXTREME CUT OFF)

Ecodesign and Energy Labelling



Replaceable (LED only)
light source by a
professional



Replaceable control
gear by a professional

Photometric

| | |
|--------------------------|-----------|
| Lighting type | Direct |
| Light distribution | Symmetric |
| CCT (K) | 3000 |
| CRI> | 90 |
| LED Life / Failure Ratio | L80B50 |
| Beam angle C0-180 (°) | 10 |
| Beam angle C90-270 (°) | 10 |

Electrical

| | |
|---------------------|-----------------|
| Insulation class | II |
| Frequency (Hz) | 50/60 |
| Forward voltage (V) | 3 |
| LED current (mA) | 900 |
| Driver | Remote included |
| Dimmable | No |
| Dimming type | Non Dimmable |

Notes

Pre-installation frame not required.