

# FLOS

05.1221.40BDA White/Steel

## Light Shadow Fixed Trim Dali Version 8 Spots Optic Flood

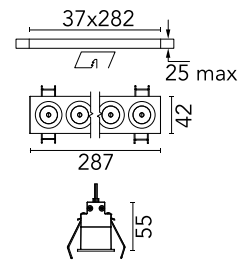
Designed by FLOS Architectural, 2022



Recessed integrated luminaire with 8 LED lighting spots. Remote power supply included (220-240V).

Are you a professional and your project needs consulting and support?

[BOOK AN APPOINTMENT](#)



### Main specifications

Mounting	Ceiling recessed
Environments	Indoor dry location
LED type	Power LED
Lamp category	LED
Number of heads	1
Power (W)	21.6
Source flux (lm)	2160
System flux (lm)	1682

### Physical

Colour	White/Steel
Trim	Yes
Orientation	Fixed
Recessed depth (mm)	75
Length (mm)	287
Net weight (kg)	0.5
Package height (mm)	10
Package width (mm)	14
IP internal	20
IP external	55

### Download

Mounting instructions [↓ PDF](#)

### Photometric Files

LDT / IES [↓ ZIP](#)

### Technical Drawings

2D [↓ ZIP](#)

3D [↓ ZIP](#)



IP

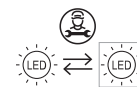
55

GWT  
850°

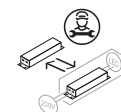
IP

20

### Ecodesign and Energy Labelling

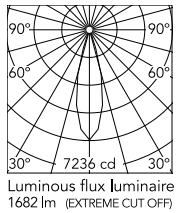


Replaceable (LED only) light source by a professional



Replaceable control gear by a professional

## Schematic light drawing



Beam Angle: 27°

h(m)	E(lx)	D(m)
1	7236	0.48
2	1809	0.96
3	804	1.43
4	453	1.91
5	289	2.39

### Photometric

Lighting type	Direct
Light distribution	Symmetric
CCT (K)	2700
CRI>	90
LED Life / Failure Ratio	L80B50
Beam angle C0-180 (°)	33
Beam angle C90-270 (°)	33

### Electrical

Insulation class	II
Frequency (Hz)	50/60
Forward voltage (V)	23.2
LED current (mA)	900
Driver	Remote included
Dimmable	Yes
Dimming type	Dimmable DALI 2
Dimming range (%)	1-100
Dimming interface	Remote Dimmable (Dimmer Not Included)

### Notes

Pre-installation frame not required.