

# FLOS

05.1307.14ANI Black/Bronze

## Light Shadow Fixed Trim Mains dimming Version 12 Spots Optic Spot NEW

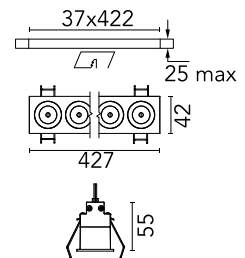
Designed by FLOS Architectural, 2022



Recessed integrated luminaire with 12 LED lighting spots. Remote power supply included (220-240V).

Are you a professional and your project needs consulting and support?

[BOOK AN APPOINTMENT](#)



### Main specifications

Mounting	Ceiling recessed
Environments	Indoor dry location
Light Source Type	LED
LED type	Power LED
Number of heads	1
Power (W)	31.3
System power (W)	32.4
Source flux (lm)	3420
System flux (lm)	2576

### Physical

Colour	Black/Bronze
Trim	Yes
Orientation	Fixed
Recessed depth (mm)	75
Length (mm)	427
Net weight (kg)	0.66
IP internal	20
IP external	55

### Download

[Mounting instructions](#)  PDF

### Photometric Files

[LDT / IES](#)  ZIP

### Technical Drawings

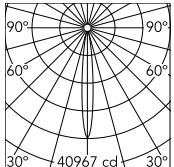
[2D](#)  ZIP

[3D](#)  ZIP

[Bim](#)  ZIP



## Schematic light drawing

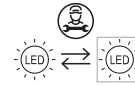


Beam Angle: 12°

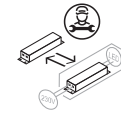
h(m)	E(lx)	D(m)
1	40967	0.20
2	10242	0.41
3	4552	0.61
4	2561	0.82
5	1638	1.02

Luminous flux Luminaire  
2576 lm (EXTREME CUT OFF)

## Ecodesign and Energy Labelling



Replaceable (LED only)  
light source by a  
professional



Replaceable control  
gear by a professional

## Photometric

Lighting type	Direct
Light distribution	Symmetric
CCT (K)	3000
CRI>	90
LED Life / Failure Ratio	L80B50
Beam angle C0-180 (°)	10
Beam angle C90-270 (°)	10

## Electrical

Insulation class	II
Frequency (Hz)	50/60
Main voltage (Vac)	220-240
LED voltage Vf (Vdc)	35.700000000000003
LED current (mA)	900
Driver	Remote included
Dimmable	Yes
Dimming type	Mains Cut Dimming

## Notes

Pre-installation frame not required.