

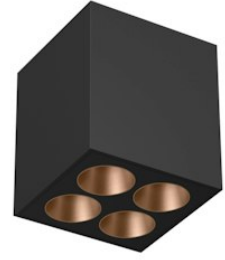
# FLOS



05.0742.14.DA Black/Black/Copper

## Light Shadow Surface Dali Version 4 Spots Square Optic Spot NEW

Designed by FLOS Architectural, 2022



789lm - 2700K - CRI> 90

Surface luminaire with 4 LED lighting spots. Power source 220-240V incorporated.

Are you a professional and your project needs consulting and support?

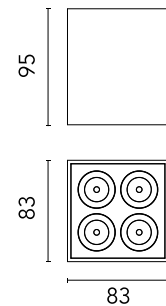
[BOOK AN APPOINTMENT](#)

### Main specifications

Mounting	Surface
Environments	Indoor dry location
Light Source Type	LED
LED type	Power LED
Number of heads	1
System power (W)	10.8
Source flux (lm)	0
System flux (lm)	789

### Physical

Colour	Black/Black/Copper
Orientation	Fixed
Net weight (kg)	0.6
Package height (mm)	19
Package width (mm)	18
Package length (mm)	22
IP internal	20



### Download

Mounting instructions [↓ PDF](#)

### Photometric Files

LDT / IES [↓ ZIP](#)

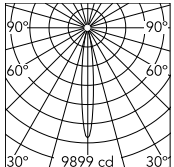
### Technical Drawings

2D [↓ ZIP](#)

3D [↓ ZIP](#)



## Schematic light drawing

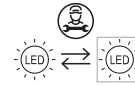


Beam Angle: 12°

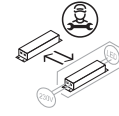
h(m)	E(lx)	D(m)
1	9899	0.22
2	2475	0.44
3	1100	0.66
4	619	0.88
5	396	1.09

Luminous flux Luminaire  
789 lm (EXTREME CUT OFF)

## Ecodesign and Energy Labelling



Replaceable (LED only)  
light source by a  
professional



Replaceable control  
gear by a professional

## Photometric

Lighting type	Direct
Light distribution	Symmetric
CCT (K)	2700
CRI>	90
LED Life / Failure Ratio	L80B10

## Electrical

Insulation class	I
Frequency (Hz)	50/60
Main voltage (Vac)	220-240
LED current (mA)	900
Driver	Integrated
Dimmable	Yes
Dimming type	Dimmable DALI 2