

FLOS



05.1222.14ACB Black/Bronze

Light Shadow Fixed Trim Casambi Version 8 Spots Optic Flood NEW

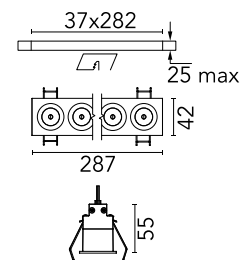
Designed by FLOS Architectural, 2022



Recessed integrated luminaire with 8 LED lighting spots. Remote power supply included (220-240V).

Are you a professional and your project needs consulting and support?

[BOOK AN APPOINTMENT](#)



Main specifications

Mounting	Ceiling recessed
Environments	Indoor dry location
Light Source Type	LED
LED type	Power LED
Number of heads	1
Power (W)	20.9
System power (W)	21.6
Source flux (lm)	2160
System flux (lm)	1619

Physical

Colour	Black/Bronze
Trim	Yes
Orientation	Fixed
Recessed depth (mm)	75
Length (mm)	287
Net weight (kg)	0.5
IP internal	20
IP external	55

Download

[Mounting instructions](#) PDF

Photometric Files

[LDT / IES](#) ZIP

Technical Drawings

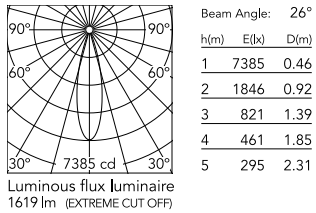
[2D](#) ZIP

[3D](#) ZIP

[Bim](#) ZIP



Schematic light drawing



Photometric

Lighting type	Direct
Light distribution	Symmetric
CCT (K)	2700
CRI>	90
LED Life / Failure Ratio	L80B50
Beam angle C0-180 (°)	33
Beam angle C90-270 (°)	33

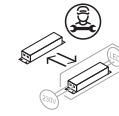
Electrical

Insulation class	II
Frequency (Hz)	50/60
Main voltage (Vac)	220-240
LED voltage Vf (Vdc)	23.2
LED current (mA)	900
Driver	Remote included
Dimmable	Yes
Dimming type	Dimmable Casambi

Ecodesign and Energy Labelling



Replaceable (LED only) light source by a professional



Replaceable control gear by a professional

Notes

Pre-installation frame not required.