

# FLOS

03.8873.14ANI Black/Black

## Light Shadow Fixed No Trim Mains dimming Version 8 Spots Optic Spot

NEW

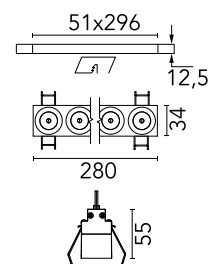
Designed by FLOS Architectural



Recessed integrated luminaire with 8 LED lighting spots. Remote power supply included (220-240V).

Are you a professional and your project needs consulting and support?

BOOK AN APPOINTMENT



### Main specifications

Mounting	Ceiling recessed
Environments	Indoor dry location
Light Source Type	LED
LED type	Power LED
Number of heads	1
Power (W)	20.9
System power (W)	21.6
Source flux (lm)	2280
System flux (lm)	1830

### Physical

Colour	Black/Black
Trim	No
Orientation	Fixed
Recessed depth (mm)	75
Length (mm)	280
Net weight (kg)	0.5
IP internal	20
IP external	55

### Download

Mounting instructions [ZIP](#)

### Photometric Files

LDT / IES [ZIP](#)

### Technical Drawings

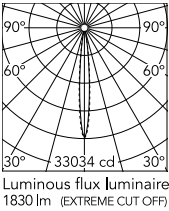
2D [ZIP](#)

3D [ZIP](#)

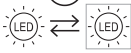

[Bim](#) [ZIP](#)



## Schematic light drawing



## Ecodesign and Energy Labelling



Replaceable (LED only)  
light source by a  
professional

Replaceable control  
gear by a professional

## Photometric

Lighting type	Direct
Light distribution	Symmetric
CCT (K)	3000
CRI>	90
Beam angle C0-180 (°)	10
Beam angle C90-270 (°)	10

## Electrical

Insulation class	II
Frequency (Hz)	50/60
Main voltage (Vac)	220-240
Alternating current voltage (Vac)	230
LED voltage Vf (Vdc)	23.8
LED current (mA)	900
Driver	Remote included
Dimmable	Yes
Dimming type	Mains Cut Dimming

## Notes

It requires a pre-installation frame, to be ordered separately.

Accessories & Power Supply

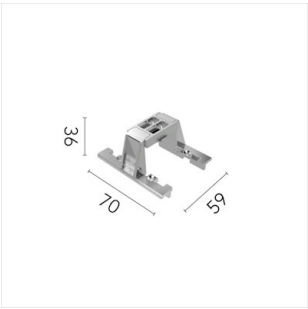


REQUIRED  
Frame

Installation

08.0512.00

Pre-installation No Trim Frame 8L  
Fix



OPTIONAL  
Accessory

Mounting

08.0052.90

Accessory for mounting of No  
Trim Fix continuous line.