

# FLOS

05.1221.40ANI White/Steel

## Light Shadow Fixed Trim Mains dimming Version 8 Spots Optic Flood NEW

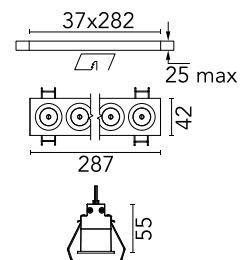
Designed by FLOS Architectural, 2022



Recessed integrated luminaire with 8 LED lighting spots. Remote power supply included (220-240V).

Are you a professional and your project needs consulting and support?

[BOOK AN APPOINTMENT](#)



### Main specifications

Mounting	Ceiling recessed
Environments	Indoor dry location
Light Source Type	LED
LED type	Power LED
Number of heads	1
Power (W)	20.9
System power (W)	21.6
Source flux (lm)	2160
System flux (lm)	1682


### Physical

Colour	White/Steel
Trim	Yes
Orientation	Fixed
Recessed depth (mm)	75
Length (mm)	287
Net weight (kg)	0.5
IP internal	20
IP external	55

### Download

[Mounting instructions](#)  PDF

### Photometric Files

[LDT / IES](#)  ZIP

### Technical Drawings

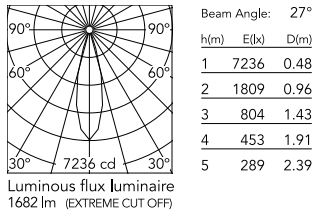
[2D](#)  ZIP

[3D](#)  ZIP

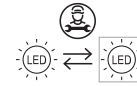
[Bim](#)  ZIP



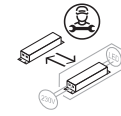
## Schematic light drawing



## Ecodesign and Energy Labelling



Replaceable (LED only)  
light source by a  
professional



Replaceable control  
gear by a professional

## Photometric

Lighting type	Direct
Light distribution	Symmetric
CCT (K)	2700
CRI>	90
LED Life / Failure Ratio	L80B50
Beam angle C0-180 (°)	33
Beam angle C90-270 (°)	33

## Electrical

Insulation class	II
Frequency (Hz)	50/60
Main voltage (Vac)	220-240
LED voltage Vf (Vdc)	23.8
LED current (mA)	900
Driver	Remote included
Dimmable	Yes
Dimming type	Mains Cut Dimming

## Notes

Pre-installation frame not required.