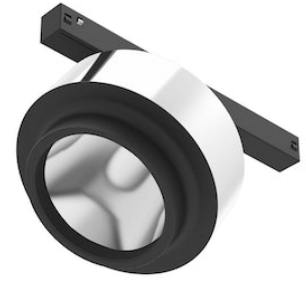


# FLOS

03.8027.05 Chrome

## Anthony Spot Track On Board Dimmer

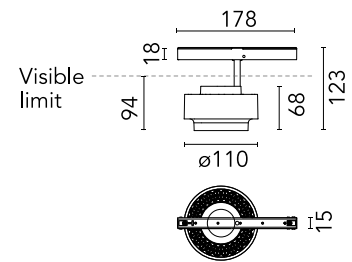
Designed by Antonio Citterio, 2018



Accent lighting LED module to be installed in The Tracking Magnet System. To obtain flood optics (35°) order Anthony Spot Medium + flood lens.

Are you a professional and your project needs consulting and support?

[BOOK AN APPOINTMENT](#)



### Main specifications

Mounting	Track
Environments	Indoor dry location
Light Source Type	LED
LED type	LED array
Lamp category	LED
Iicos	No
Bulb finish	Clear
Number of heads	1
Power (W)	16.5
System power (W)	17.6
Source flux (lm)	1860
System flux (lm)	1425
Efficacy (lm/W)	80.97

### Physical

Colour	Chrome
Trim	No
Orientation	Adjustable
Rotation (°)	360
Longitudinal tilting (°)	90
Spot diameter (mm)	110
Length (mm)	178
Net weight (kg)	0.43
IP internal	20
IP external	20

### Download

[Mounting instructions](#) PDF

### Photometric Files

[LDT / IES](#) ZIP

### Technical Drawings

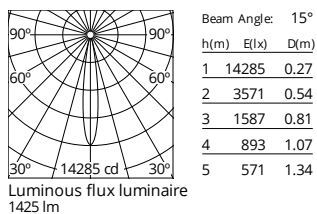
[2D](#) ZIP

[3D](#) ZIP

[Bim](#) ZIP



## Schematic light drawing



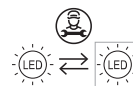
## Photometric

Lighting type	Direct
Light distribution	Symmetric
CCT (K)	3000
CRI>	90
McAdam steps (SDCM)	2
LED Life / Failure Ratio	L80B50
Beam angle C0-180 (°)	15
Beam angle C90-270 (°)	15
UGR <sub>L</sub>	11

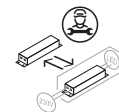
## Electrical

Insulation class	III
Forward voltage (V)	48
LED current (mA)	450
Driver	Remote excluded
Dimmable	Yes
Dimming type	Dimmer on board
Dimming range (%)	20-100
Dimming interface	Dimmer Integrated
Emergency type	No

## Ecodesign and Energy Labelling



Replaceable (LED only) light source by a professional



Replaceable control gear by a professional

## Notes

For wireless lighting control, choose integrated Casambi versions.

## Accessories & Power Supply



OPTIONAL  
Accessory

Optical

08.0050.00

Flood lens



OPTIONAL  
Accessory

Optical

08.8418.68A

Elliptical lens



OPTIONAL  
Accessory

Optical

08.8419.14A

Honeycomb