

FLOS

■ F002B30B030.B Black

Klein Pro H 900 mm Dimmable 1-10V Black

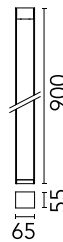
Designed by FLOS Outdoor



220-240V power supply integrated. Solid surface or ground installation accessories to be ordered separately. Each luminaire is equipped with 1000 mm length outgoing cable and a wiring kit.

Are you a professional and your project needs consulting and support?

BOOK AN APPOINTMENT



Main specifications

Mounting	Ground
Environments	Outdoor wet location
LED type	Power LED
Lamp category	LED
Iicos	No
Power (W)	11
System flux (lm)	304

Physical

Colour	Black
Trim	No
Orientation	Fixed
Net weight (kg)	1.95
IP internal	66

Download

Mounting instructions [↓ ZIP](#)

Photometric Files

LDT / IES [↓ ZIP](#)

Technical Drawings

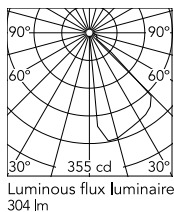
2D [↓ ZIP](#)

3D [↓ ZIP](#)

[↓ ZIP](#) Bim



Schematic light drawing



Photometric

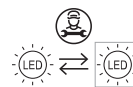
Lighting type	Direct
Light distribution	Asymmetric
CCT (K)	3000
CRI>	80
Beam angle C0-180 (°)	45
Beam angle C90-270 (°)	20

Electrical

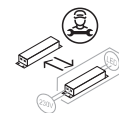
Insulation class	II
Frequency (Hz)	50-60
Main voltage (Vac)	220-240
Driver	Integrated
Dimmable	Yes
Dimming type	Dimmable 1-10V
Emergency type	No

Ecodesign and Energy Labelling

This product contains a light source of energy efficiency class E



Replaceable (LED only) light source by a professional



Replaceable control gear by a professional

Notes

During the installation and the maintenance of the fixtures it is important to be careful and avoid damages on the paint coating.

Damages on the coating exposed to outdoor conditions or water, could cause corrosion.

Chemical substances affect the anticorrosion covering protection.

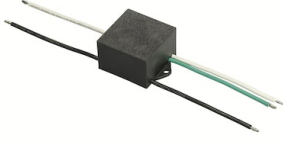
For LED fixtures, there is evidence that most of the damages are connected to electrical effects related to the insulations, which cause destructive electrical discharges

These effects are frequently caused by:

- over voltage coming from the mains' network where fixture is connected.
- electrostatic discharge (ESD) coming from the environment.

The use of a protective device against the overvoltage on the electrical installation is warmly suggest this helps to reduce the intensity of some of these phenomenon and prevent irreversible damages. The selection of the type of device to be used must be adjust on the electrical plant.

Accessories & Power Supply



OPTIONAL
Accessory

F990E00A000

S.P.D. (SURGE PROTECTION
DEVICE)



OPTIONAL
Accessory

F002Z020000

Klein Pro base plate and fixing
bolts 85x85xH160 mm



OPTIONAL
Accessory

F002Z030000.A

Minimal Klein Pro ground fixation
plate, 47x57xH160 mm



OPTIONAL
Accessory

F002Z010030.A

Fixing base for solid surfaces
Black



OPTIONAL
Accessory

F002Z050070

Anodized aestetical pole screen
Anodized Natural



OPTIONAL
Accessory

F002Z050071

Anodized aestetical pole screen
Anodized Black



OPTIONAL
Accessory

F002Z050073

Anodized aestetical pole screen
Anodized Gold